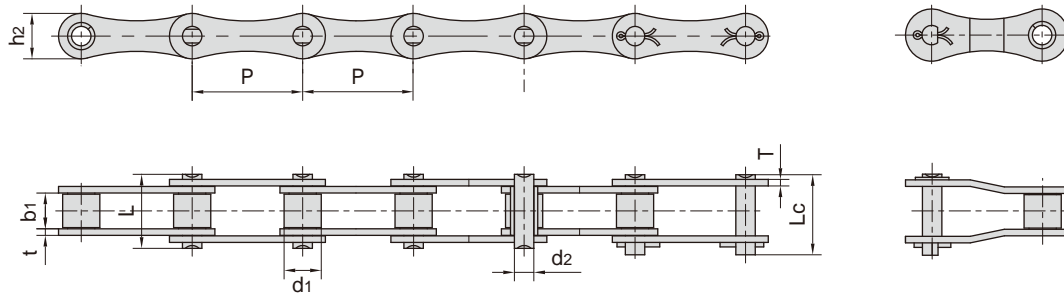


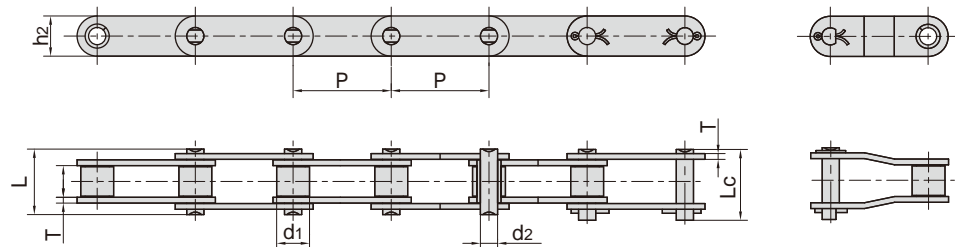
## 不锈钢双节距滚子链 Stainless steel double pitch roller chains



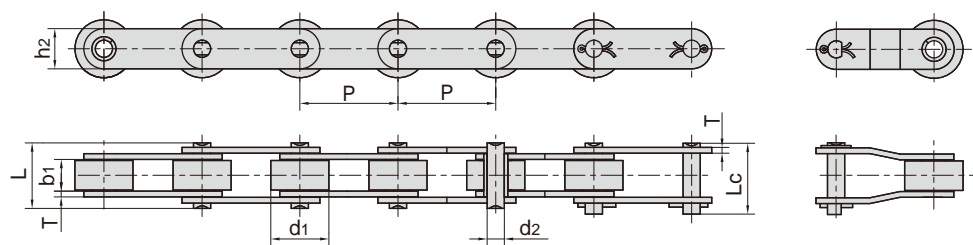
| 东华链号<br>Donghua<br>Chain No. | 节距<br>Pitch | 滚子直径<br>Roller<br>diameter | 内节内宽<br>Width<br>between<br>inner plates | 销轴直径<br>Pin<br>diameter | 销轴长度<br>Pin<br>length |           | 内链板高度<br>Inner<br>plate<br>depth | 链板厚度<br>Plate<br>thickness | 破断载荷<br>Breaking<br>load | 每米长重<br>Weight<br>per<br>meter |
|------------------------------|-------------|----------------------------|--|-------------------------|-----------------------|-----------|----------------------------------|----------------------------|--------------------------|--------------------------------|
|                              | P           | d1<br>max                  | b1<br>min                                | d2<br>max               | L<br>max              | Lc<br>max | h2<br>max                        | t/T<br>max                 | Q<br>min                 | q                              |
|                              | mm          | mm                         | mm                                       | mm                      | mm                    | mm        | mm                               | mm                         | kN/lbf                   | kg/m                           |
| 208ASS                       | 25.40       | 7.95                       | 7.85                                     | 3.96                    | 16.60                 | 17.80     | 12.00                            | 1.50                       | 9.6/2158                 | 0.42                           |
| 208BSS                       | 25.40       | 8.51                       | 7.75                                     | 4.45                    | 16.70                 | 18.20     | 11.80                            | 1.60                       | 12.0/2698                | 0.45                           |
| 210ASS                       | 31.75       | 10.16                      | 9.40                                     | 5.08                    | 20.70                 | 22.20     | 15.00                            | 2.03                       | 15.2/3417                | 0.73                           |
| 210BSS                       | 31.75       | 10.16                      | 9.65                                     | 5.08                    | 19.50                 | 20.90     | 14.70                            | 1.70                       | 13.3/2990                | 0.66                           |
| 212ASS                       | 38.10       | 11.91                      | 12.57                                    | 5.94                    | 25.90                 | 27.70     | 18.00                            | 2.42                       | 21.7/4878                | 1.02                           |
| 212BSS                       | 38.10       | 12.07                      | 11.68                                    | 5.72                    | 22.50                 | 25.20     | 16.00                            | 1.85                       | 18.5/4159                | 0.76                           |
| 216ASS                       | 50.80       | 15.88                      | 15.75                                    | 7.92                    | 32.70                 | 36.50     | 24.00                            | 3.25                       | 38.9/8745                | 1.70                           |
| 216BSS                       | 50.80       | 15.88                      | 17.02                                    | 8.28                    | 36.10                 | 39.10     | 21.00                            | 4.50/3.10                  | 40.0/8992                | 1.80                           |
| 220ASS                       | 63.50       | 19.05                      | 18.90                                    | 9.53                    | 40.40                 | 44.70     | 30.00                            | 4.00                       | 60.0/13488               | 2.55                           |
| 220BSS                       | 63.50       | 19.05                      | 19.56                                    | 10.19                   | 41.30                 | 45.00     | 26.40                            | 4.50/3.50                  | 57.0/12814               | 2.62                           |
| 224ASS                       | 76.20       | 22.23                      | 25.22                                    | 11.10                   | 50.30                 | 54.30     | 35.70                            | 4.80                       | 76.2/17130               | 4.06                           |
| 224BSS                       | 76.20       | 25.40                      | 25.40                                    | 14.63                   | 53.40                 | 57.80     | 33.20                            | 6.00/4.80                  | 104.0/23379              | 4.66                           |

## 不锈钢双节距滚子链 Stainless steel double pitch roller chains

小滚子型  
Small roller type



大滚子型  
Large roller type



| 东华链号<br>Donghua<br>Chain No. | 节距<br>Pitch | 滚子直径<br>Roller<br>diameter | 内节内宽<br>Width<br>between<br>inner plates | 销轴直径<br>Pin<br>diameter | 销轴长度<br>Pin<br>length |           | 内链板高度<br>Inner<br>plate<br>depth | 链板厚度<br>Plate<br>thickness | 破断载荷<br>Breaking<br>load | 每米长重<br>Weight<br>per<br>meter |
|------------------------------|-------------|----------------------------|--|-------------------------|-----------------------|-----------|----------------------------------|----------------------------|--------------------------|--------------------------------|
|                              | P           | d1<br>max                  | b1<br>min                                | d2<br>max               | L<br>max              | Lc<br>max | h2<br>max                        | T<br>max                   | Q<br>min                 | q                              |
|                              | mm          | mm                         | mm                                       | mm                      | mm                    | mm        | mm                               | mm                         | kN/lbf                   | kg/m                           |
| C2040SS<br>C2042SS           | 25.40       | 7.95<br>15.88              | 7.85                                     | 3.96                    | 16.6                  | 17.8      | 12.0                             | 1.50                       | 9.6/2182                 | 0.51<br>0.85                   |
| C2040HSS                     | 25.40       | 7.95                       | 7.85                                     | 3.96                    | 18.8                  | 19.9      | 12.0                             | 2.03                       | 9.6/2182                 | 0.66                           |
| C208BSS<br>C208BLSS          | 25.40       | 8.51<br>15.88              | 7.75                                     | 4.45                    | 16.7                  | 18.2      | 11.8                             | 1.60                       | 12.0/2727                | 0.56<br>0.90                   |
| C2050SS<br>C2052SS           | 31.75       | 10.16<br>19.05             | 9.40                                     | 5.08                    | 20.7                  | 22.2      | 15.0                             | 2.03                       | 15.2/3455                | 0.79<br>1.29                   |
| C210BSS                      | 31.75       | 10.16                      | 9.65                                     | 5.08                    | 19.5                  | 20.9      | 14.7                             | 1.70                       | 13.3/2990                | 0.75                           |
| C2060SS<br>C2062SS           | 38.10       | 11.91<br>22.23             | 12.57                                    | 5.94                    | 25.9                  | 27.7      | 18.0                             | 2.42                       | 21.7/4932                | 1.13<br>1.63                   |
| C2060HSS<br>C2062HSS         | 38.10       | 11.91<br>22.23             | 12.57                                    | 5.94                    | 29.2                  | 31.6      | 18.0                             | 3.25                       | 21.7/4932                | 1.46<br>2.10                   |
| C212BSS                      | 38.10       | 12.07                      | 11.68                                    | 5.72                    | 22.5                  | 25.2      | 16.0                             | 1.85                       | 18.5/4159                | 0.89                           |
| C2080SS<br>C2082SS           | 50.80       | 15.88<br>28.58             | 15.75                                    | 7.92                    | 32.7                  | 36.5      | 24.0                             | 3.25                       | 38.9/8841                | 2.11<br>3.16                   |
| C2080HSS<br>C2082HSS         | 50.80       | 15.88<br>28.58             | 15.75                                    | 7.92                    | 36.2                  | 39.4      | 24.0                             | 4.00                       | 38.9/8841                | 2.57<br>3.63                   |
| C216BSS                      | 50.80       | 15.88                      | 17.02                                    | 8.28                    | 36.1                  | 39.1      | 21.0                             | 4.50/3.10                  | 40.0/8992                | 2.10                           |
| C2100SS<br>C2102SS           | 63.50       | 19.05<br>39.67             | 18.90                                    | 9.53                    | 40.4                  | 44.7      | 30.0                             | 4.00                       | 60.0/13636               | 3.05<br>4.89                   |
| C2100HSS<br>C2102HSS         | 63.50       | 19.05<br>39.67             | 18.90                                    | 9.53                    | 43.6                  | 46.9      | 30.0                             | 4.80                       | 60.0/13636               | 3.61<br>5.45                   |
| C220BSS                      | 63.50       | 19.05                      | 19.56                                    | 10.19                   | 41.3                  | 45.0      | 26.4                             | 4.50/3.50                  | 57.0/12814               | 2.93                           |